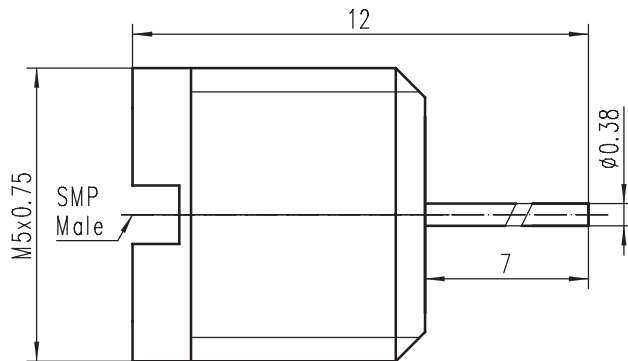


CONNECTOR SMP-Male

SMP-JYD2-L



Code: 260507

Electrical data

Impedance	50 Ω
Frequency	DC to 26.5 GHz
VSWR	≤ 1.35 , DC to 18 GHz
Insertion loss	$\leq 0.05 \times \sqrt{f(\text{GHz})}$ dB, DC to 18 GHz
Insulation resistance	$\geq 5 \text{ G}\Omega$
Center contact resistance	$\leq 6.0 \text{ m}\Omega$
Outer contact resistance	$\leq 2.0 \text{ m}\Omega$
Test voltage	500 V rms
Working voltage	335 V rms
Contact Current	1.2A DC max.

Mechanical data

Mating cycles	≥ 500
Center contact captivation	$\geq 7 \text{ N}$
Engagement force	
- Limited detent	45 N max.
Disengagement force	
- Limited detent	9 N min.

Material and plating

Connector parts	Material	Plating
Center contact	CuBe	Gold
Outer contact	Brass	Gold
Dielectric	PTFE	

Environmental data

Temperature range	-65°C to +165°C
Thermal shock	MIL-STD-202, Method 107, Condition B
Vibration	MIL-STD-202, Method 204, Condition A
Shock	MIL-STD-202, Method 213, Condition A
Moisture resistance	MIL-STD-202, Method 106
Soldering temperature	250°C max.
Leakage rate	$\leq 10^{-8}$ mbar x l/s
Pressure	2N/mm ² max.
2002/95/EC (RoHS)	compliant