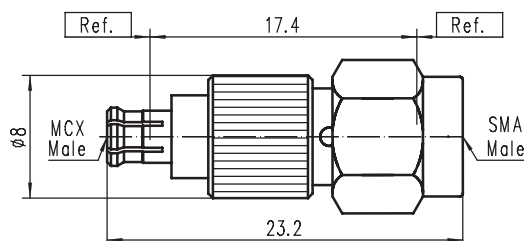
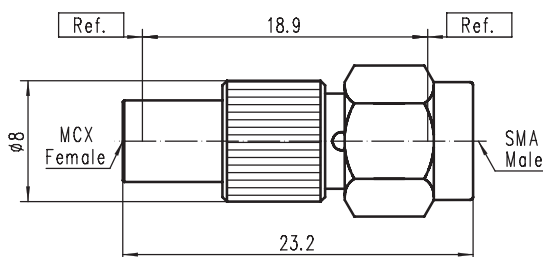


# SMA - MCX系列间转接器

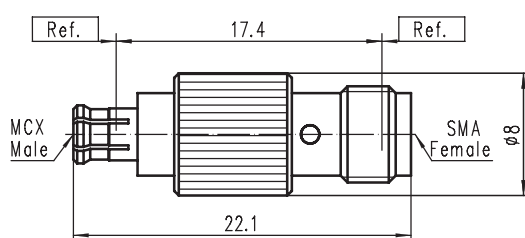
| 主要性能指标 |              | 材料/表面处理 |       |
|--------|--------------|---------|-------|
| 特性阻抗   | 50Ω          | 壳体      | 黄铜 镀金 |
| 频率范围   | DC ~ 6GHz    | 内导体     | 镀铜 镀金 |
| 连接器耐久性 | ≥500次        | 绝缘体     | PTFE  |
| 温度范围   | -60℃ ~ +165℃ |         |       |



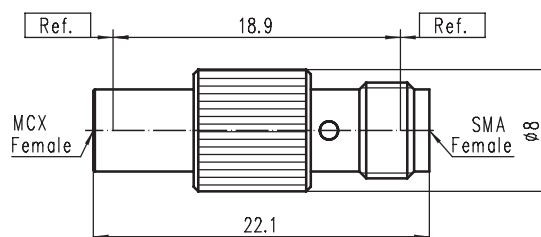
CODE: 100042  
 TYPE: SMA / MCX - JJ  
 VSWR: DC - 6GHz...1.15 : 1(max)



CODE: 100043  
 TYPE: SMA / MCX - JK  
 VSWR: DC - 6GHz...1.15 : 1(max)



CODE: 100044  
 TYPE: SMA / MCX - KJ  
 VSWR: DC - 6GHz...1.15 : 1(max)



CODE: 100045  
 TYPE: SMA / MCX - KK  
 VSWR: DC - 6GHz...1.15 : 1(max)