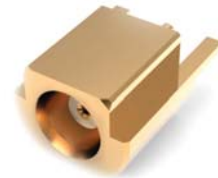
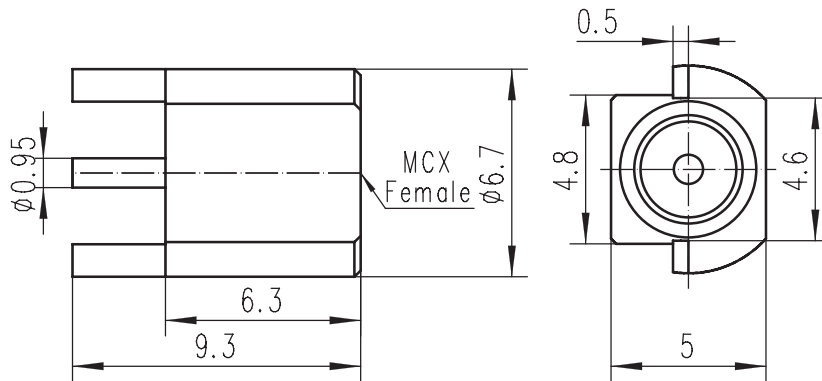


CONNECTOR MCX-Female

MCX-KHD10



Code: 300101

Electrical data

Impedance	50 Ω
Frequency	DC to 6 GHz
Return loss	≥ 25 dB, DC to 1 GHz ≥ 20 dB, 1 to 4 GHz
Insertion loss	$\leq 0.05 \times \sqrt{f(\text{GHz})}$ dB, DC to 4 GHz
Insulation resistance	≥ 1 G Ω
Center contact resistance	≤ 5.0 m Ω
Outer contact resistance	≤ 2.5 m Ω
Test voltage	750 V rms
Working voltage	335 V rms
Contact Current	1.5A DC max.

Mechanical data

Mating cycles	min. 500
Center contact captivation	≥ 10 N
Engagement force	≤ 25 N
Disengagement force	8 N min. to 20 N max.

Material and plating

Connector parts	Material	Plating
Center contact	CuBe	Gold
Outer contact	Brass	Gold
Dielectric	PTFE	

Environmental data

Temperature range	-55°C to +155°C
Thermal shock	CECC 22 220, Chapter 4.6.7
Vibration	CECC 22 220, Chapter 4.6.3
Corrosion	CECC 22 220, Chapter 4.6.10
Moisture resistance	CECC 22 220, Chapter 4.6.6
2002/95/EC (RoHS)	compliant