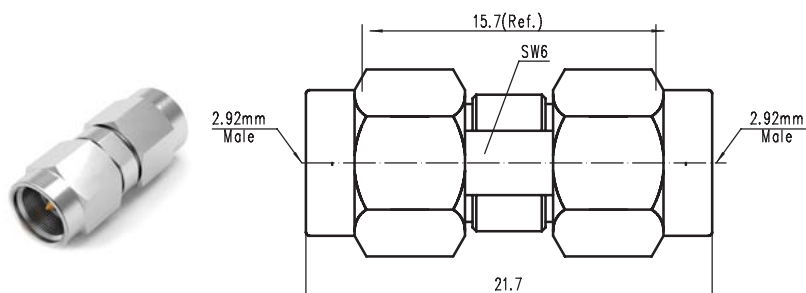
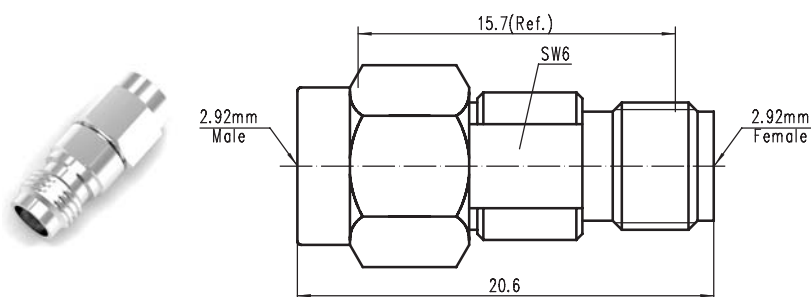


校准0 2.92mm系列内转接器

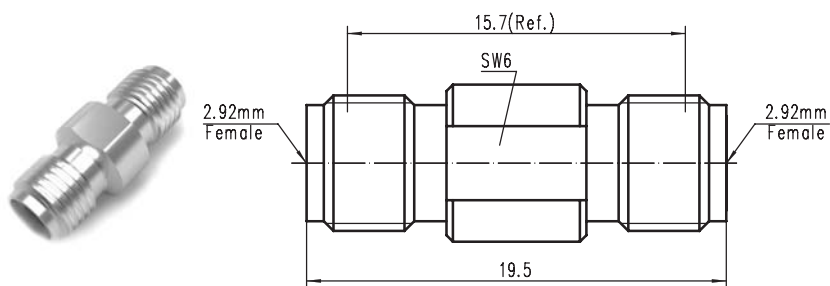
| 主要性能指标 | | 材料/表面处理 | |
|--------|------------|---------|-------------|
| 特性阻抗 | 50Ω | 壳体 | 不锈钢SU303 钝化 |
| 频率范围 | DC ~ 40GHz | 内导体 | 镀铜 镀金 |
| 连接器耐久性 | ≥500次 | 绝缘体 | PEI |
| 温度范围 | -60℃~+165℃ | | |



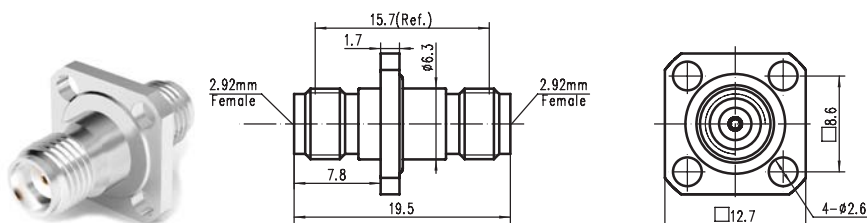
CODE: 100189
 TYPE: 2.92mm - JJG08
 VSWR: DC - 40GHz...1.08 : 1(max)



CODE: 100190
 TYPE: 2.92mm - JKG08
 VSWR: DC - 40GHz...1.08 : 1(max)



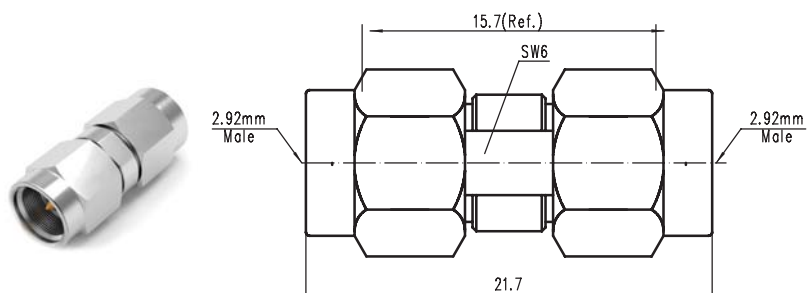
CODE: 100191
 TYPE: 2.92mm - KKG08
 VSWR: DC - 40GHz...1.08 : 1(max)



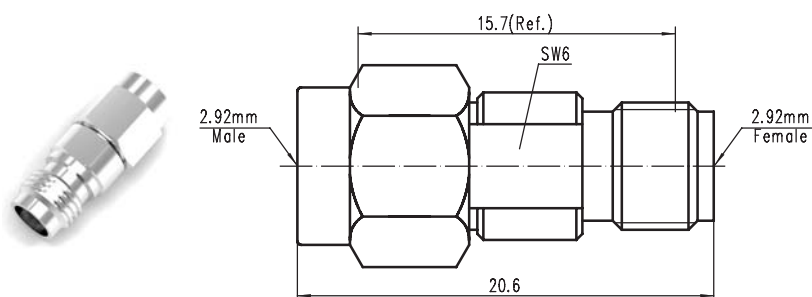
CODE: 100192
 TYPE: 2.92mm - KFKG08
 VSWR: DC - 40GHz...1.08 : 1(max)

校准 | 2.92mm系列内转接器

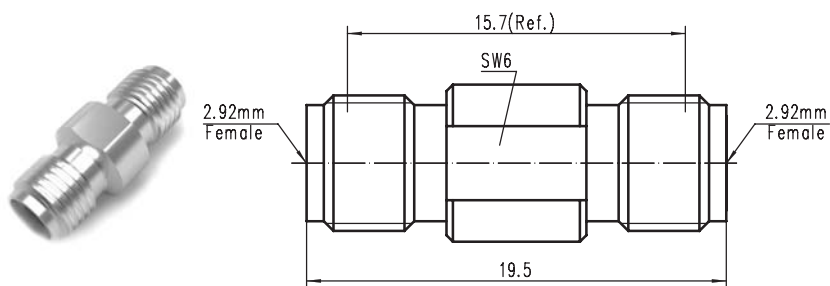
| 主要性能指标 | | 材料/表面处理 | |
|--------|------------|---------|-------------|
| 特性阻抗 | 50Ω | 壳体 | 不锈钢SU303 钝化 |
| 频率范围 | DC ~ 40GHz | 内导体 | 镀铜 镀金 |
| 连接器耐久性 | ≥500次 | 绝缘体 | PEI |
| 温度范围 | -60℃~+165℃ | | |



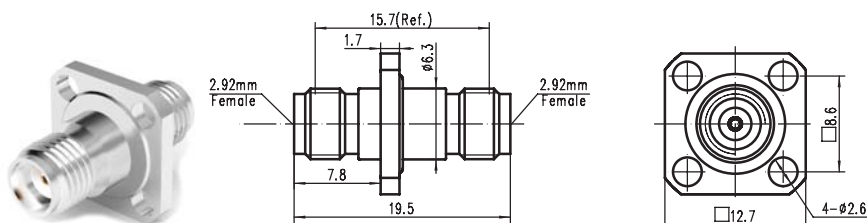
CODE: 100229
 TYPE: 2.92mm - JJG10
 VSWR: DC - 40GHz...1.10 : 1(max)



CODE: 100230
 TYPE: 2.92mm - JKG10
 VSWR: DC - 40GHz...1.10 : 1(max)



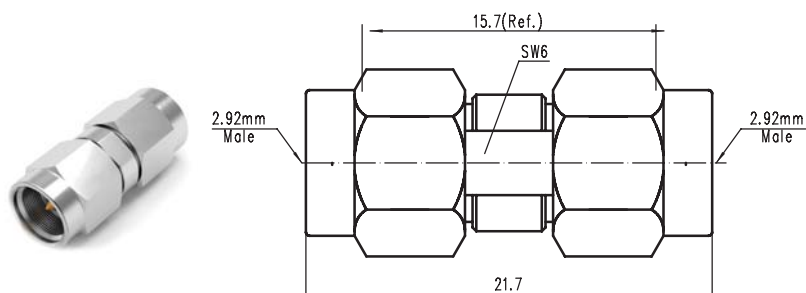
CODE: 100231
 TYPE: 2.92mm - KKG10
 VSWR: DC - 40GHz...1.10 : 1(max)



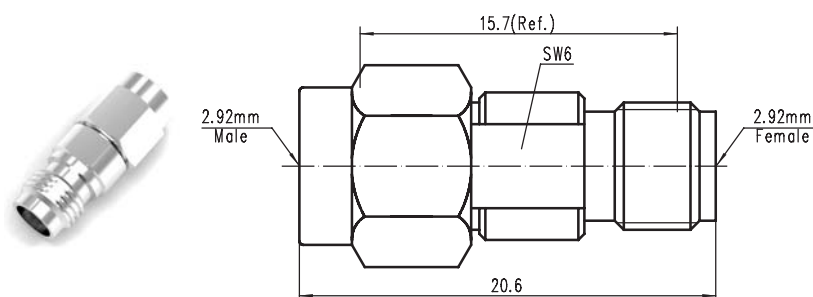
CODE: 100232
 TYPE: 2.92mm - KFKG10
 VSWR: DC - 40GHz...1.10 : 1(max)

校准 I | 2.92mm 系列内转接器

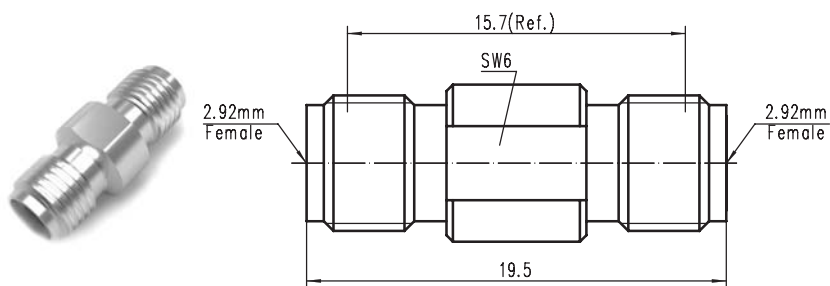
| 主要性能指标 | | 材料/表面处理 | |
|--------|------------|---------|-------------|
| 特性阻抗 | 50Ω | 壳体 | 不锈钢SU303 钝化 |
| 频率范围 | DC ~ 40GHz | 内导体 | 镀铜 镀金 |
| 连接器耐久性 | ≥500次 | 绝缘体 | PEI |
| 温度范围 | -60℃~+165℃ | | |



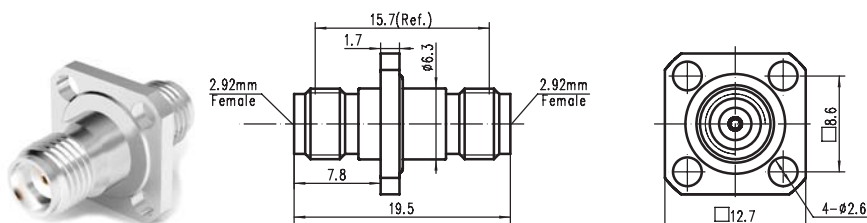
CODE: 100269
 TYPE: 2.92mm - JJG12
 VSWR: DC - 40GHz...1.12 : 1(max)



CODE: 100270
 TYPE: 2.92mm - JKG12
 VSWR: DC - 40GHz...1.12 : 1(max)



CODE: 100271
 TYPE: 2.92mm - KKG12
 VSWR: DC - 40GHz...1.12 : 1(max)



CODE: 100272
 TYPE: 2.92mm - KFKG12
 VSWR: DC - 40GHz...1.12 : 1(max)