

SMA系列半刚半柔电缆连接器

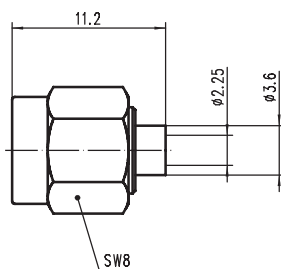


Fig. 1

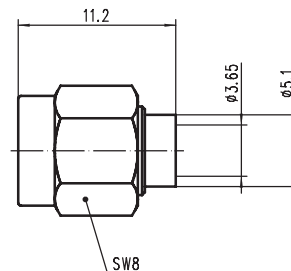


Fig. 2

型号	代码	螺母/主体材料及涂覆	电缆	Fig.
SMA-JB2	130 301	brass, gold (SS**, passivated)	086	1
SMA-JB3	130 302	brass, gold (SS**, passivated)	141	2

**后缀加G表示不锈钢螺套

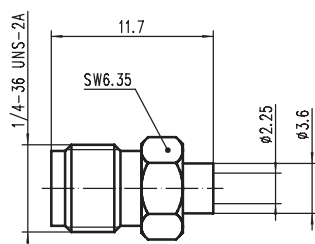


Fig. 1

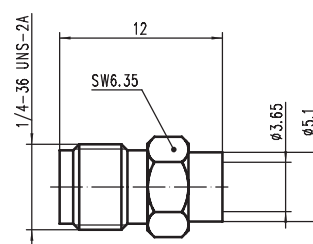
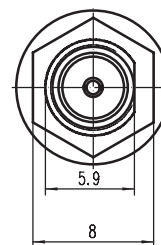
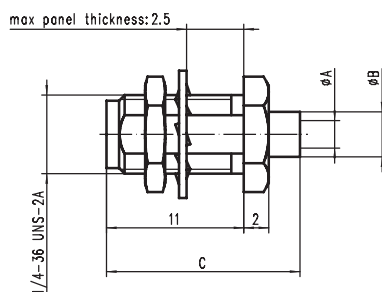


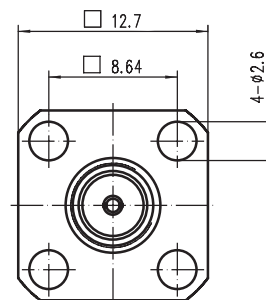
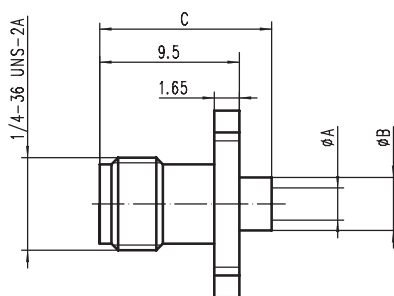
Fig. 2

型号	代码	主体材料及涂覆	电缆	Fig.
SMA-KB2	130 303	brass, gold	086	1
SMA-KB3	130 304	brass, gold	141	2

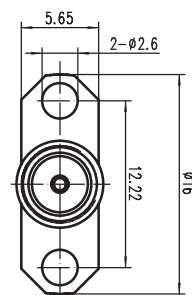
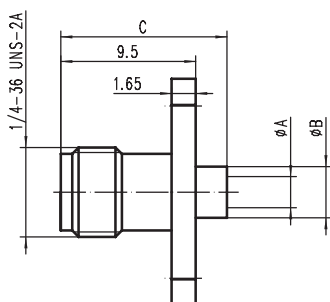


型号	代码	主体材料及涂覆	A	B	C	电缆
SMA-KYB2	130 305	brass, gold	2.25	3.6	15.5	086
SMA-KYB3	130 306	brass, gold	3.65	5.1	15.8	141

SMA系列半刚半柔电缆连接器



TYPE	Code	BODY MATERIALS&FINISH	A	B	C	Match Cable
SMA-KFB2	130 307	brass, gold	2.25	3.6	11.7	086
SMA-KFB3	130 308	brass, gold	3.65	5.1	12.0	141



TYPE	Code	BODY MATERIALS&FINISH	A	B	C	Match Cable
SMA-KFB2A	130 309	brass, gold	2.25	3.6	11.7	086
SMA-KFB3A	130 310	brass, gold	3.65	5.1	12.0	141