

N系列连接器

● 概述

N系列连接器是一种中功率的螺纹式连接器，它具有连接可靠、抗震性强、机械和电气性能优良、使用方便等特点。广泛应用于无线系统和电子仪器设备中。我司的精密型产品回波损耗小，承受功率大，使用频率高，可以用于测试设备中，比如矢量网络仪和功率开关等。

● 主要性能

特性指标：50 Ω

频率范围：DC-11GHz

V S W R：≤1.30, DC-11GHz

频率范围：DC-18GHz（精密型）

V S W R：≤1.15 DC-18GHz

绝缘电阻：≥5000MΩ

介质耐压：1500V

连接器耐久性：500次

● 材料及涂覆

壳体：不锈钢钝化（精密型）

壳体：黄铜镀镍或镀三元合金

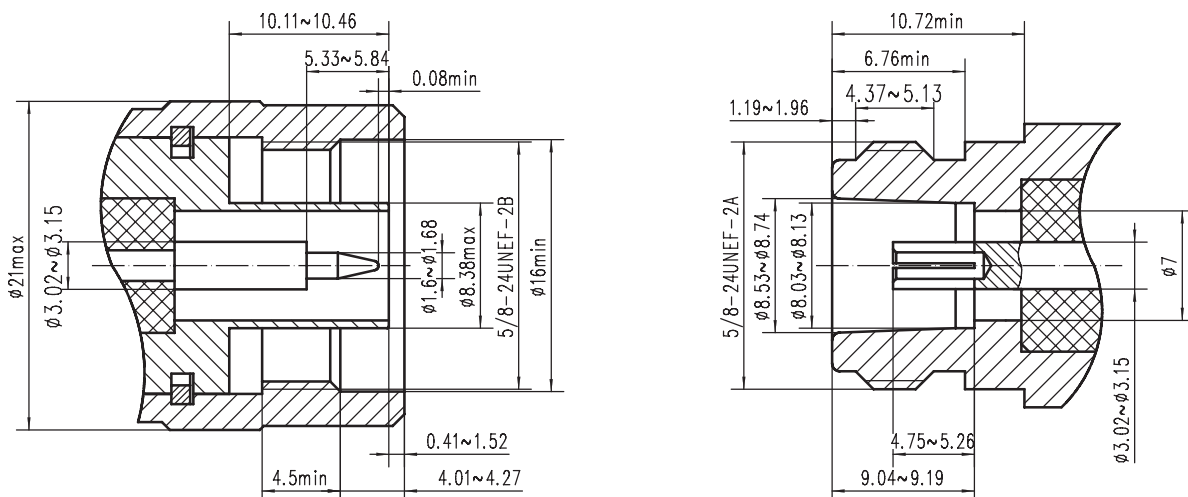
内导体：

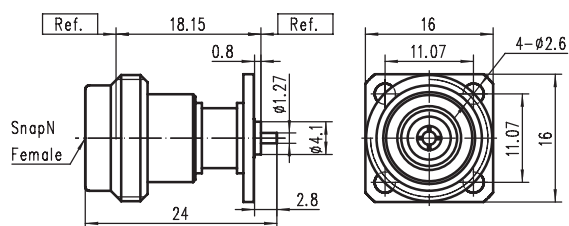
插针—黄铜，镀金；

插孔—铍青铜，镀金

绝缘体：PTFE / PEI

● 界面尺寸

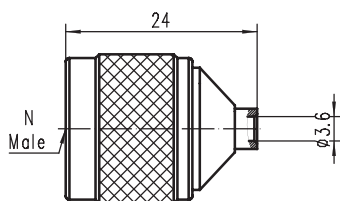




CODE: 200019

TYPE: SnapN - KFD1

Freq: DC - 11GHz

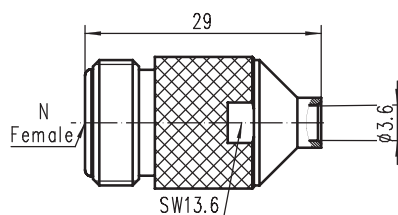


CODE: 200025

TYPE: N - JB3

Freq: DC - 11GHz

配接电缆: 141

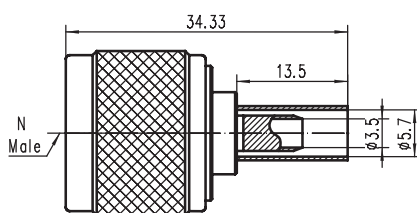


CODE: 200026

TYPE: N - KB3

Freq: DC - 11GHz

配接电缆: 141

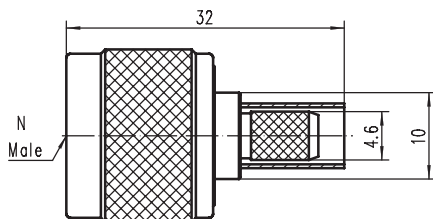


CODE: 200008

TYPE: N - J5D

Freq: DC - 6GHz

配接电缆: RG142

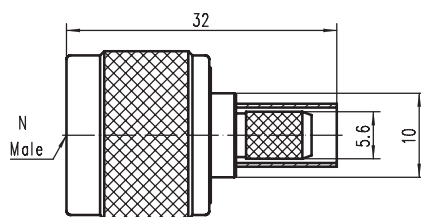


CODE: 200027

TYPE: N-JL200

Freq: DC - 6GHz

配接电缆: LMR200

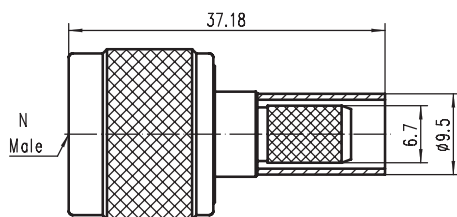


CODE: 200009

TYPE: N - JL240

Freq: DC - 6GHz

配接电缆: LMR240

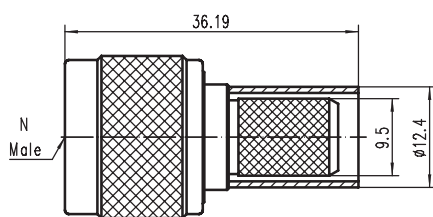


CODE: 200010

TYPE: N - JL300

Freq: DC - 6GHz

配接电缆: LMR300



CODE: 200011

TYPE: N - JL400

Freq: DC - 6GHz

配接电缆: LMR400