

SSMP系列连接器

● 概述

SSMP是一种超小型插拔式连接器，它具有体积小、重量轻、频带宽、连接可靠等优点。有全擒纵、和光孔两种结构。

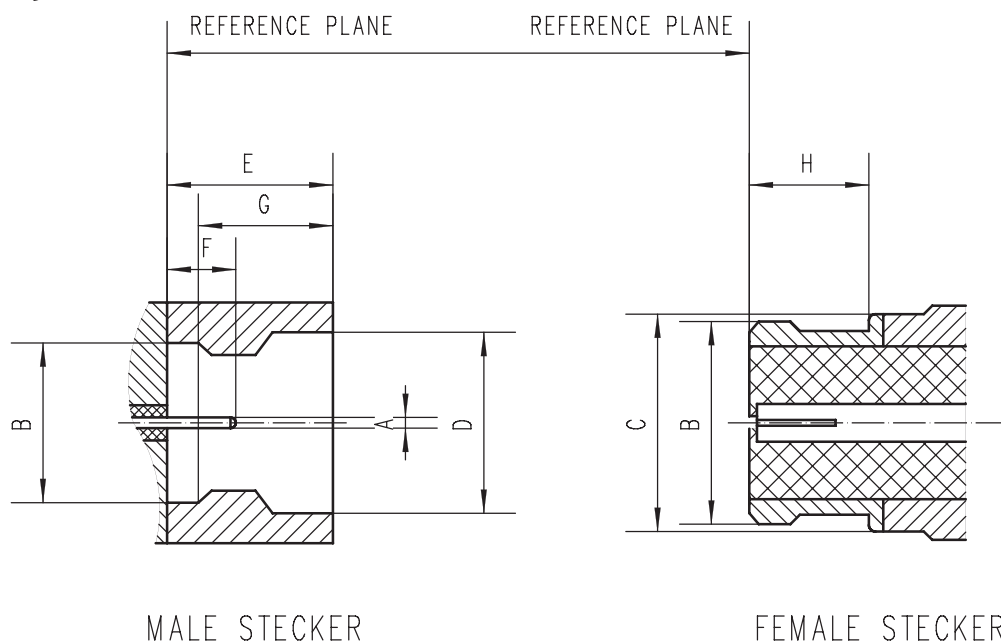
● 主要性能

特性指标：50 Ω
 频率范围：DC-65GHz
 V S W R：≤1.35
 绝缘电阻：≥5000MΩ
 介质耐压：250V
 连接器耐久性：500次

● 材料及涂覆

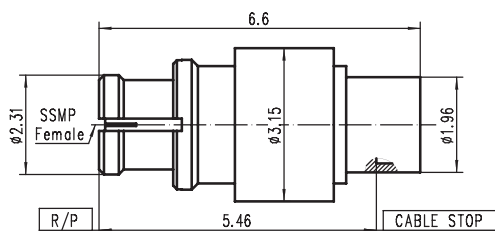
壳体：镀青铜镀金
 内导体：镀青铜镀金
 绝缘体：PTFE / PEI

● 界面尺寸

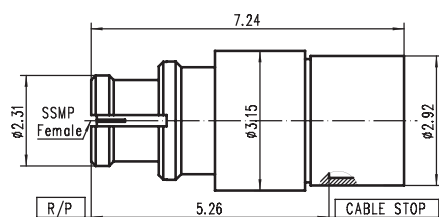


symbol	MALE STECKER	symbol	FEMALE KUPPLER
a	0.32	a	
b	2.20	b	2.20
c	2.75	c	2.75
d	2.80	d	
e	2.10	e	
f	1.00	f	
g	1.55	g	
h		h	1.75

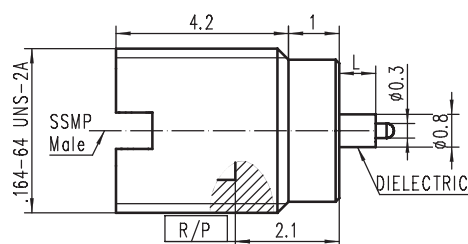
SSMP系列连接器



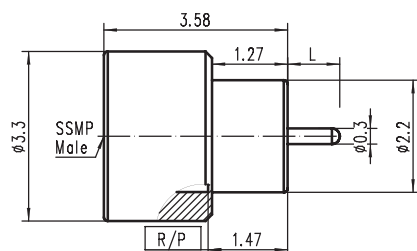
CODE: 270501
TYPE: SSMP - KB1
Freq: DC - 40GHz
配接电缆: 047



CODE: 270502
TYPE: SSMP-KB2
Freq: DC - 40GHz
配接电缆: 086



CODE	TYPE	L	Freq
270503	SSMP-JYD1-F	0.38 mm	DC
270504	SSMP-JYD2-F	1.7 mm	- 40GHz



CODE	TYPE	L	Freq
270505	SSMP-JD1-F-TAB	0.762 mm	DC -40GHz
270506		1.27 mm	
270507		1.778 mm	
270508		2.286 mm	