

SMP系列连接器

● 概述

SMP是一种小型插拔式连接器，它具有体积小、重量轻、频带宽、连接可靠等优点。有全擒纵、有限擒纵和光孔三种结构。

● 主要性能

特性指标：50Ω

频率范围：DC-40GHz

V S W R : ≤ 1.35

绝缘电阻： $\geq 1000\text{M}\Omega$

介质耐压：500V

连接器耐久性：500次

● 材料及涂覆

壳体：不锈钢SU303或黄铜镀金

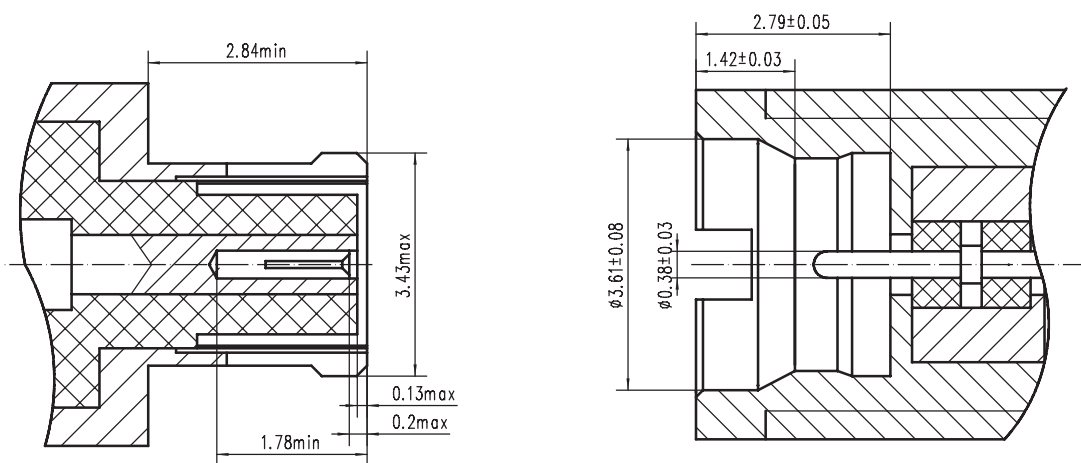
内导体：

插针—锡青铜，镀金；

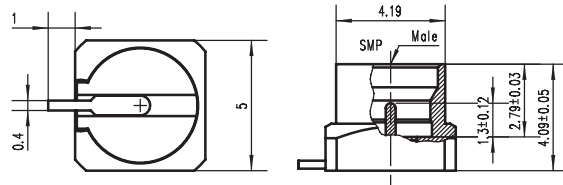
插孔—铍青铜，镀金。

绝缘体：PTFE / PEI

● 界面尺寸



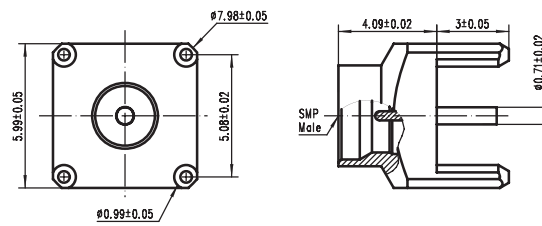
SMP连接器



CODE: 260503

TYPE: SMP - JHT - L

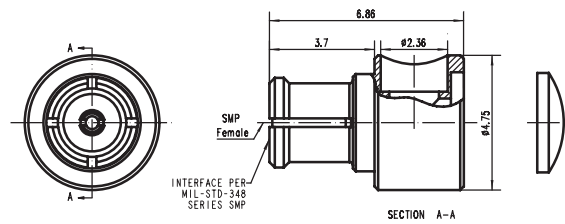
Freq: DC - 18GHz



CODE: 260504

TYPE: SMP - JHD2 - L

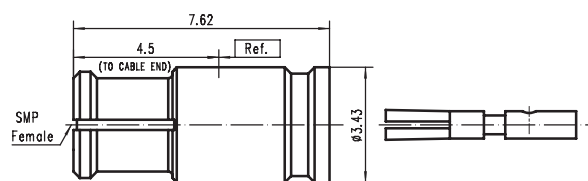
Freq: DC - 6GHz



CODE: 260506

TYPE: SMP - KWB2

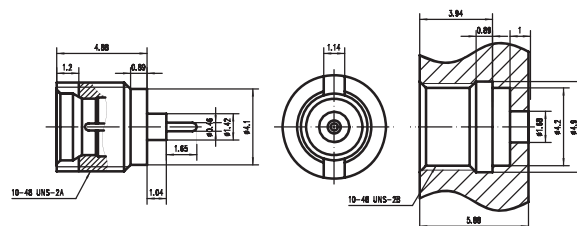
Freq: DC - 26.5GHz



CODE: 260505

TYPE: SMP - KB2

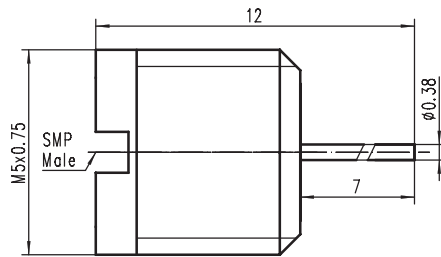
Freq: DC - 26.5GHz



CODE: 260502

TYPE: SMP - JYD1 - L

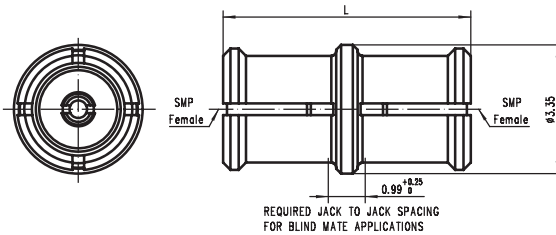
Freq: DC - 18GHz



CODE: 260507

TYPE: SMP-JYD2-L

Freq: DC - 18GHz



CODE	TYPE	Freq	L
260501	SMP-KK645		645mm
260508	SMP-KK990	DC	9.90mm
260509	SMP-KK145	-26.5GHz	14.50mm
260510	SMP-KK224		22.40mm