

2. 92mm系列连接器

● 概述

2.92mm系列连接器也称为K接头，可以与SMA、3.5mm互换，它具有体积小、重量轻、高频率等优点。广泛应用于毫米波设备和系统中。

● 主要性能

特性指标：50 Ω

频率范围：DC-40GHz

V S W R： ≤1.20

绝缘电阻： ≥3000MΩ

介质耐压：750V

连接器耐久性：500次

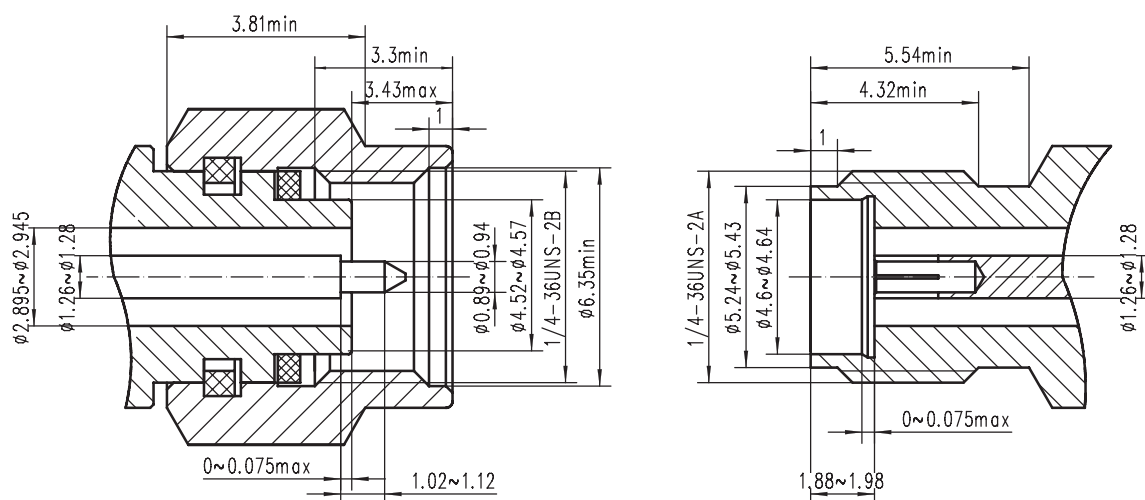
● 材料及涂覆

壳体：不锈钢或黄铜镀金

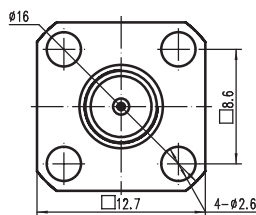
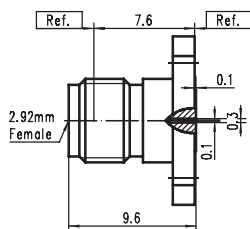
内导体：铍青铜，镀金。

绝缘体：PEI

● 界面尺寸



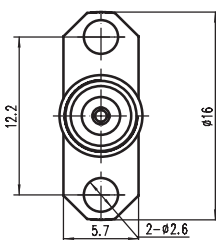
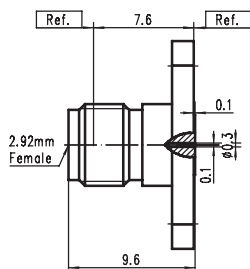
2. 92mm系列可拆卸式连接器



CODE: 230002

TYPE: 2.92mm - KFD1G

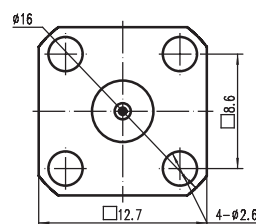
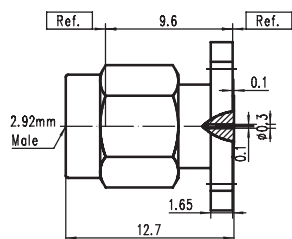
Freq: DC - 40GHz



CODE: 230007

TYPE: 2.92mm - KFD1AG

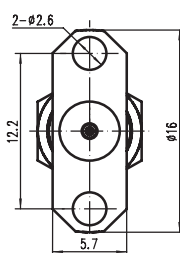
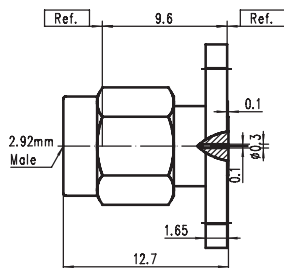
Freq: DC - 40GHz



CODE: 230004

TYPE: 2.92mm - JFD1G

Freq: DC - 40GHz

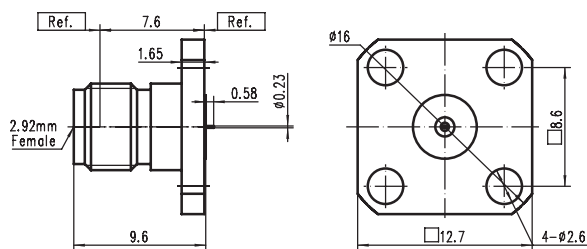


CODE: 230008

TYPE: 2.92mm - JFD1AG

Freq: DC - 40GHz

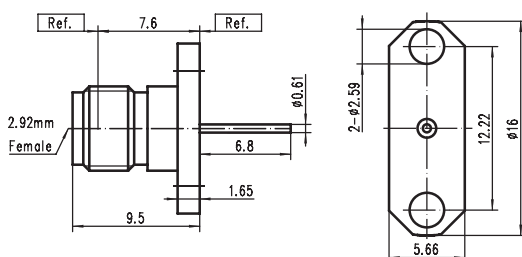
2. 92mm系列穿板式连接器



CODE: 230009

TYPE: 2.92mm - KFD4G

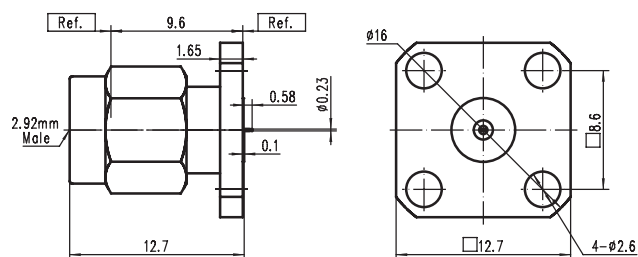
Freq: DC - 40GHz



CODE: 230006

TYPE: 2.92mm - KFD3G

Freq: DC - 40GHz



CODE: 230010

TYPE: 2.92mm - JFD4G

Freq: DC - 40GHz