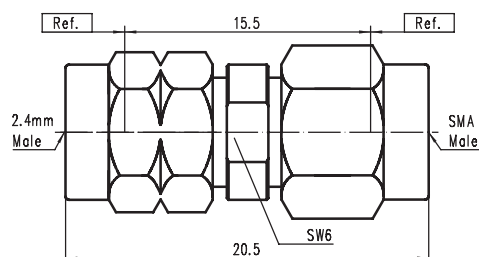


## 2.4mm – SMA系列间转换器

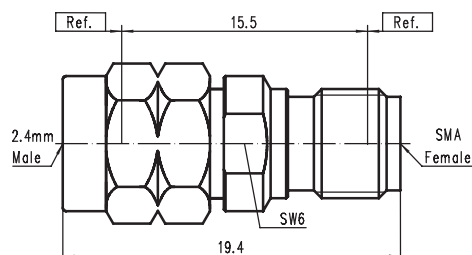
主要性能指标		材料/表面处理	
特性阻抗	50Ω	壳体	不锈钢SU303 钝化
频率范围	DC ~ 27GHz	内导体	镀铜 镀金
连接器耐久性	≥500次	绝缘体	PEI
温度范围	-60°C~+165°C		



CODE: 100092

TYPE: 2.4mm / SMA - JYG

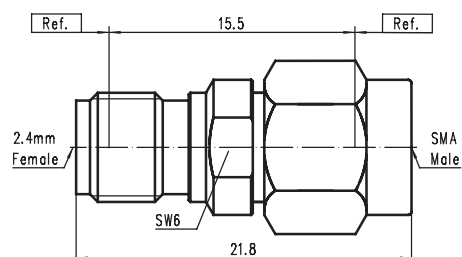
VSWR: DC - 27GHz...1.15 : 1(max)



CODE: 100093

TYPE: 2.4mm / SMA - JKG

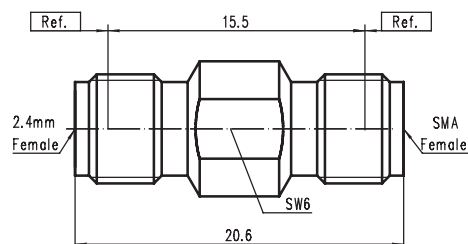
VSWR: DC - 27GHz...1.15 : 1(max)



CODE: 100094

TYPE: 2.4mm / SMA - KJG

VSWR: DC - 27GHz...1.15 : 1(max)



CODE: 100095

TYPE: 2.4mm / SMA - KKG

VSWR: DC - 27GHz...1.15 : 1(max)